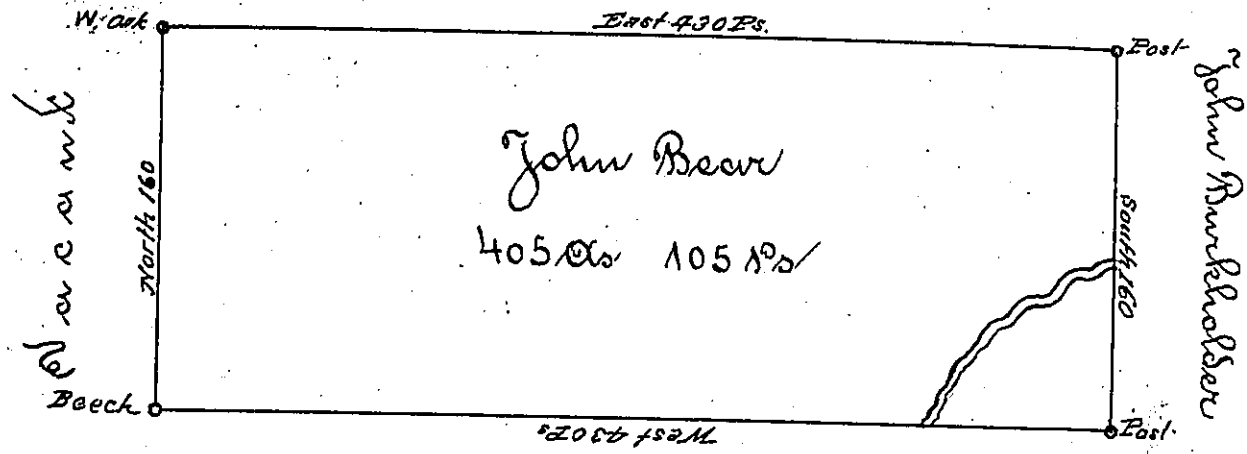


John Messer Junr



John Buckwalter

Situated on the Waters of Tualick Creek in Wheatfield Township, Westmoreland County: containing 405 Acres & 105 perches & allowance of six plant for Roads &c. Surveyed for John Bear the 24th day of Novem^r 1794 on warrant dated the 3^d day of May 1793 ~

Daniel Broadhead Esq^r D. J.

James Ross, D. D.

IN TESTIMONY that the above is a copy of the original remaining on file in the Department of Internal Affairs of Pennsylvania, made conformably to an Act of Assembly approved the 16th day of February, 1833, I have hereunto set my Hand and caused the Seal of said Department to be affixed at Harrisburg, this

first day of August 1894

[Signature]
 Secretary of Internal Affairs